

Creating Custom SQL Display Grids in Espresso Instructions

Description

Version 7.1

Create a tile with a custom display grid in Espresso. Connect to SYSPRO data or custom SQL views. Create custom reporting on a busy executive's mobile device or create real time production reporting for a factory supervisor in one tile. Simple presentation with endless possibilities.

Pass parameters to SQL tables and views for reporting on specific customers, supplier, jobs, etc... by clicking a tile in Espresso.

Requirements

SYSPRO
Espresso
SQL 2008 or above

Release Notes

There is a bug in Espresso Application Configuration that causes "N End" to be added EspDataStore table. Detailed instructions on how to correct this are included.

Summary

Creating a custom list view in Espresso fundamentally consists of two steps.

1. Creating a tile in Espresso.
2. Adding an "Espresso Custom Configuration" in SYSPRO.

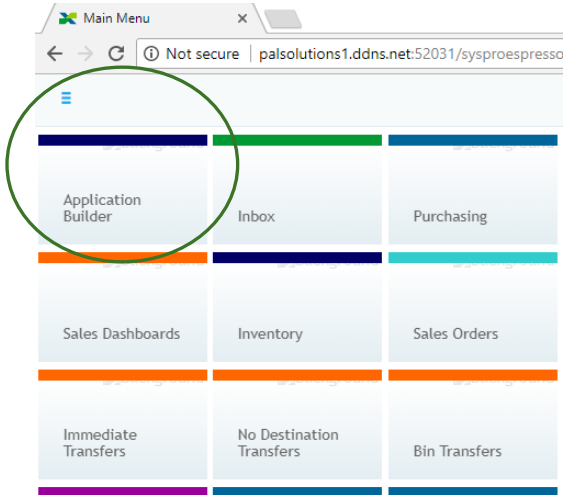
The "Espresso Custom Configuration" allows you to enter an SQL statement that will be returned to the tile in Espresso. The SQL statement can call any SYSPRO table or custom views.

Contents

| | |
|--|----|
| Creating a Simple Application that Connects to a Table or View | 3 |
| Adding a Tile | 3 |
| Adding an Espresso Custom Configuration | 6 |
| Creating an Application that Passes a Key | 9 |
| Adding an Espresso Custom Configuration that Receives a Key | 10 |
| Notes | 11 |

Creating a Simple Application that Connects to a Table or View

Adding a Tile



Go to Application Builder in Espresso

Build Application Save

Details

| | |
|-------------------|----------------------|
| Caption | Banks |
| Style | Display |
| Use Splitview | Never |
| Primary key field | <input type="text"/> |

Editing

| | |
|--------------------|-------------------------------------|
| Application to Use | <input type="text"/> |
| Button Caption | <input type="text"/> |
| Add to menu | <input checked="" type="checkbox"/> |

Manage Components

Choose Add a new application.
Name your application
Choose "YES" for "Add to menu"
Select "Manage Components."

Design Mode Save

☰ PALSolutionsSQLDisplayGrid Inline -

Add Component +



Select the PALSolutionsSQLDisplayGrid.
Then Save and return to the Espresso home screen.

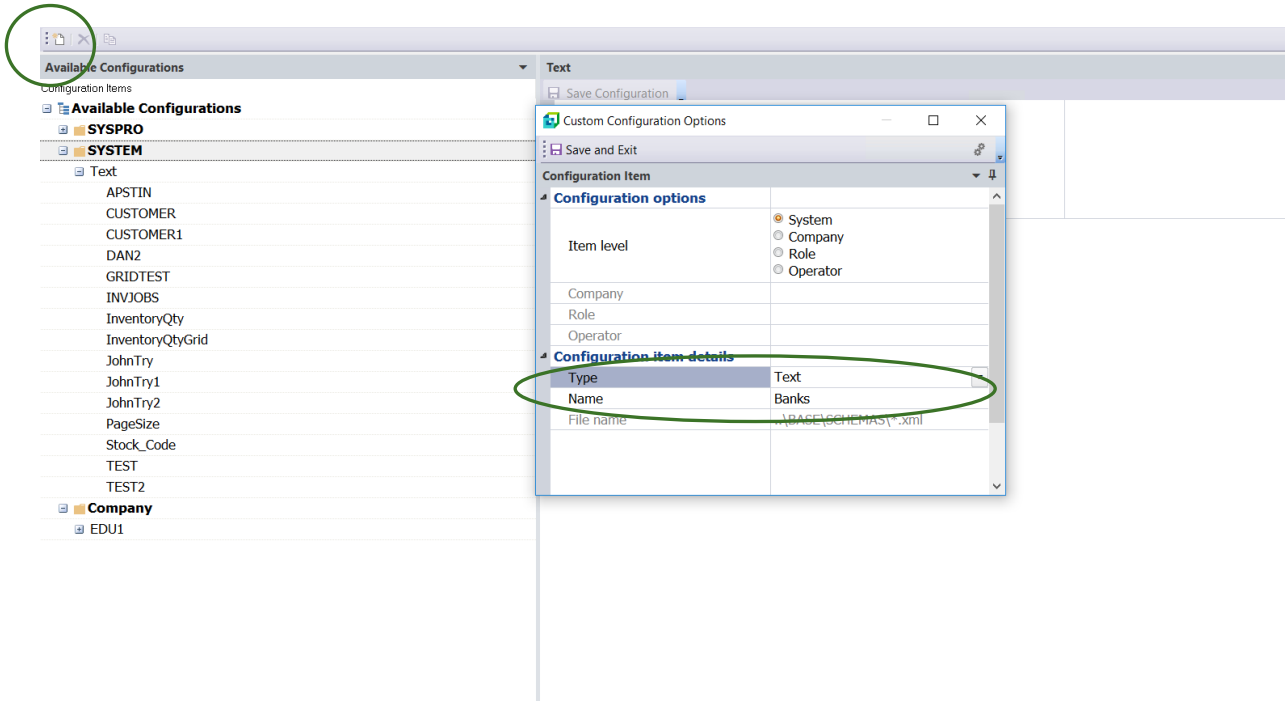


The new tile has been added.

Adding an Espresso Custom Configuration

In SYSPRO go to SYSPRO Espresso and choose Espresso Custom Configuration

The screenshot displays the SYSPRO application's main interface. At the top, there is a navigation bar with tabs for 'Home', 'Setup', 'Import', 'Query', and 'Administration'. Below this, a ribbon contains various tool icons such as 'Program List', 'Notepad', 'Reminder', 'Executive View', 'Navigation Pane', 'Calendar', 'Browser', 'Favorites', 'System-wide View', 'Inbox', 'Tasks', 'Flow Graph', and 'Role View'. On the right side, there are icons for 'Financial Distribution Man' and 'Queries'. The main content area is titled 'Program List' and shows a tree view of system components. The 'SYSPRO Espresso' folder is expanded, and 'Espresso Custom Configuration' is highlighted with a blue background. Other items in the list include 'Electronic Fund Transfer', 'Factory Scheduling', 'General Ledger', 'Inventory', 'Inventory Planning', 'Lot Traceability', 'Product Configurator', 'Projects and Contracts', 'Purchase Orders', 'Quotations', 'Report Writer', 'Requirements Planning', 'Sales Analysis', 'Sales Orders', 'SRS Documents', 'SYSPRO Analytics', 'Espresso App Manager', 'Espresso Application Builder', 'Espresso Barcode Configuration', 'Espresso Design Menus', 'Espresso Push Notifications', 'Espresso Search Configuration', 'Espresso User Licenses', 'SYSPRO Reporting Services', 'SYSPRO to SYSPRO Interface', and 'SYSPRO Workflow Services'.

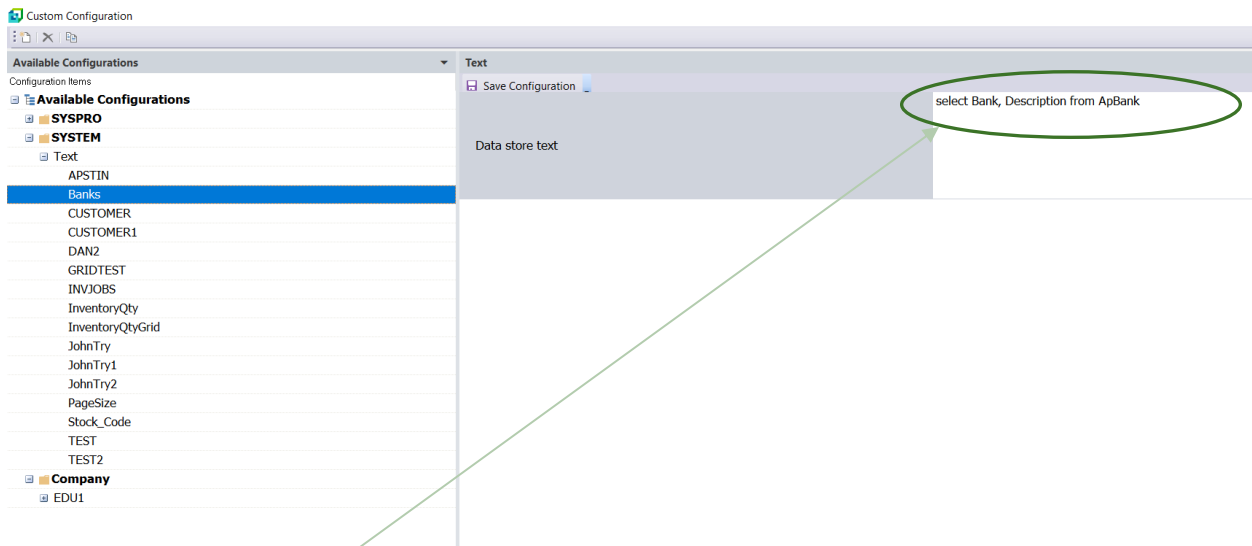


Change Type to text and give the configuration a name.

*****Note the Application Caption Name must match the Configuration Item Details Name*****

Save and Exit

The new configuration appears in the list.



Add a select statement.

Return to Espresso and select the new menu tile for the application created.

↑

Banks

Export to Excel

Drag Grouping Columns Here

| Bank | Description |
|------|----------------------------------|
| FB | First United Bank |
| GB | Global Bnk |
| NB | National Foreign Currency Bank |
| SB | Standard Bank |
| TB | Transaction Bank - Point of Sale |

Creating an Application that Passes a Key

Add a tile. See Adding a Tile instructions.

Build Application


Details


| | |
|-------------------|----------------------|
| Caption | InventoryQty |
| Style | Display ▼ |
| Use Splitview | Never ▼ |
| Primary key field | StockCodeWarehouse 🔍 |

Editing

| | |
|--------------------|---|
| Application to Use | 🔍 |
| Button Caption | |

| | |
|------|--------------|
| Id | 100011 |
| Name | InventoryQty |


Details

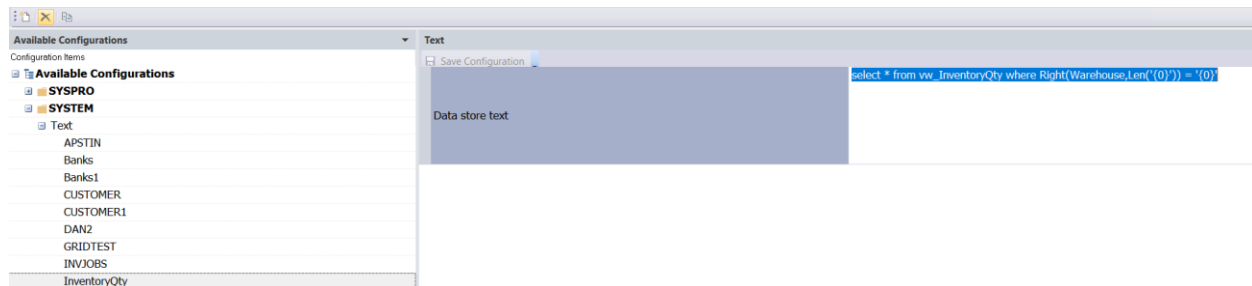

Manage Components

Choose the key from the Primary Key Field look up.

Add the component by choosing “Manage Components”. See page “Adding a Tile.”

Adding an Espresso Custom Configuration that Receives a Key

In SYSPRO go to SYSPRO Espresso and choose Espresso Custom Configuration

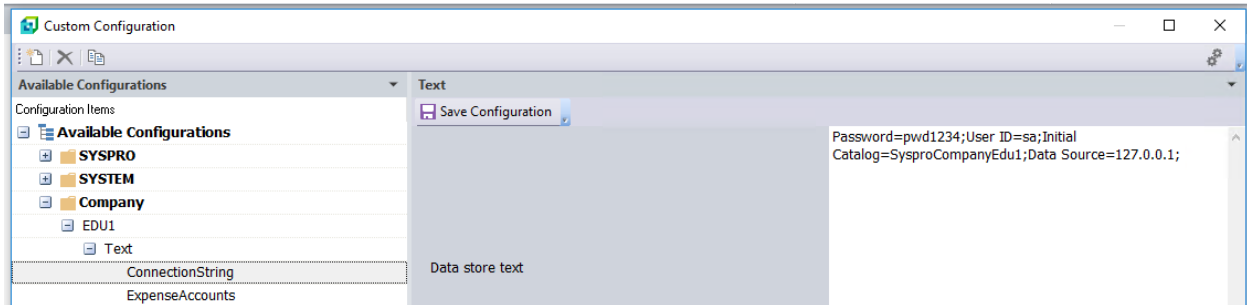


Add a select statement the calls the key. {0} represents the key. The keys returned from Espresso may not match the key in the database. The statement below addresses this issue using the length of the key returned from Espresso. The statement below also uses a view and an * to return all columns.

```
select * from vw_InventoryQty where Right(Warehouse,Len('{0}')) = '{0}'
```

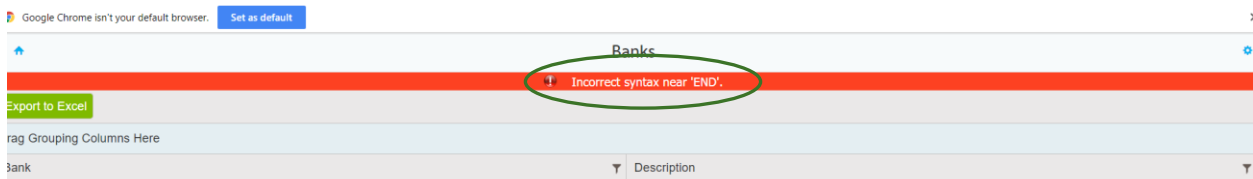
Notes and Possible Error Corrections

1. A ConnectionString statement must be added to the Espresso Custom Configuration.



Password=pwd1234;User ID=sa;Initial Catalog=SysproCompanyEdu1;Data Source=127.0.0.1;
Replace the variables with your appropriate settings.

2. Adding a system configuration of "PageSize" will allow you to control the number of rows displayed per page in the application.
3. Column headers can be set by using the AS clause. Put the words in square brackets if there needs to be a space between the words in a column header. For example:
Select Bank AS [Bank Name], Description from ApBank
4. If you get the following error:



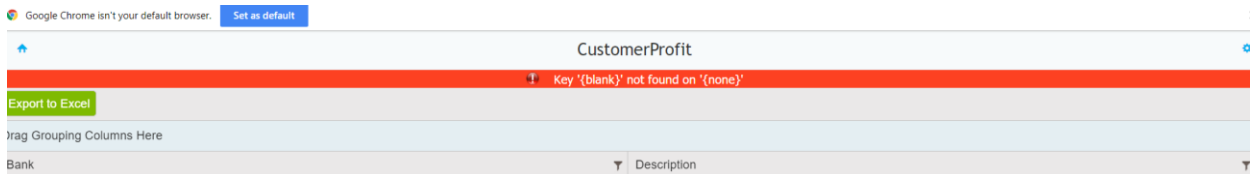
This indicates the application configuration has been edited. Espresso erroneously adds an "N End" in the SQL statement when save is selected. This error can be corrected manually but is corrected with in port 31.

To correct this error manually. Select the new addition and add your SQL statement. Choose Save Configuration.

You must then go to the SQL Server Management Studio and Edit SQL in the SYSPRO System Database. In the dbo.EspDataStore table remove "N END" from the newly created Application Name. See below.

| LevelId | LevelValue | StoreType | StoreName | DeviceId | StoreData |
|---------|------------|-----------|---------------|----------|---|
| 0 | SYSPRO | XML | SYSPROEspr... | 3000 | <Query> <Key> <Customer>0000001 </Customer> </Key> <Option> <FromDate>2006-03-28 </FromDa |
| 0 | SYSPRO | XML | SYSPROEspr... | 3000 | <Query> <Option> <IncludeFutures>N </IncludeFutures> <IncludeTransactions>Y </IncludeTransactions> <L |
| 0 | SYSPRO | XML | SYSPROEspr... | 3000 | <PostInBackflushing> <Parameters> <TransactionDate>2006-11-09 </TransactionDate> <IgnoreWar |
| 0 | SYSPRO | XML | SYSPROEspr... | 3000 | <PostInAdjustments> <Parameters> <TransactionDate>2006-11-28 </TransactionDate> <PhysicalCou |
| 0 | SYSPRO | XML | SYSPROEspr... | 3000 | <PostInBinTransfers> <Parameters> <TransactionDate>2006-11-28 </TransactionDate> <IgnoreWarni |
| 0 | SYSPRO | XML | SYSPROEspr... | 3000 | <PostInCostChange> <Parameters> <TransactionDate>2006-11-28 </TransactionDate> <IgnoreWarni |
| 0 | SYSPRO | XML | SYSPROEspr... | 3000 | <PostInExpenseIssues> <Parameters> <TransactionDate>2006-11-28 </TransactionDate> <PostingPer |
| 0 | SYSPRO | XML | SYSPROEspr... | 3000 | <PostInCostModification> <Parameters> <TransactionDate>2006-11-28 </TransactionDate> <Ignore |
| 0 | SYSPRO | XML | SYSPROEspr... | 3000 | <PostInWhTransferOut> <Parameters> <TransactionDate>2006-11-27 </TransactionDate> <IgnoreW |
| 0 | SYSPRO | XML | SYSPROEspr... | 3000 | <PostInReceipts> <Parameters> <TransactionDate>2006-11-22 </TransactionDate> <IgnoreWarnings |
| 0 | SYSPRO | XML | SYSPROEspr... | 3000 | <PostPurchaseOrders> <Parameters> <ValidateOnly>N </ValidateOnly> <IgnoreWarnings>W </IgnoreWarni |
| 0 | SYSPRO | XML | SYSPROEspr... | 3000 | <PostPurchaseOrderReceipts> <Parameters> <IgnoreWarnings>N </IgnoreWarnings> <NonStockedWhToUs |
| 0 | SYSPRO | XML | SYSPROEspr... | 3000 | <PostRequisition> <Parameters> <AllowNonStockedItems>Y </AllowNonStockedItems> <AcceptGLCo |
| 0 | SYSPRO | XML | SYSPROEspr... | 3000 | <SalesOrders> <Parameters> <InBoxMsgReqd>N </InBoxMsgReqd> <Process>IMPORT </Process> |
| 0 | SYSPRO | XML | SYSPROEspr... | 3000 | <PostSalesOrdersSCT> <Parameters> <SourceWarehouse/> <TargetWarehouse/> <ShipFromDefault |
| 0 | SYSPRO | XML | SYSPROEspr... | 3000 | <PostJob> <Parameters> <ActionType>A </ActionType> <ValidateOnly>N </ValidateOnly> <ApplyIfEntireDo |
| 0 | SYSPRO | XML | SYSPROEspr... | 3000 | <PostLabourAllocations> <Parameters> <ValidateOnly>Y </ValidateOnly> <IgnoreWarnings>N </IgnoreWa |
| 0 | SYSPRO | XML | SYSPROEspr... | 3000 | <PostMaterialAllocations> <Parameters> <ValidateOnly>Y </ValidateOnly> <IgnoreWarnings>N </IgnoreWa |
| 0 | SYSPRO | XML | SYSPROEspr... | 3000 | <PostMaterial> <Parameters> <TransactionDate>2006-02-21 </TransactionDate> <PostingPeriod>C </Postin |
| 0 | SYSPRO | XML | SYSPROEspr... | 3000 | <PostApInvoice> <Parameters> <PostingPeriod>C </PostingPeriod> <IgnoreWarnings>Y </IgnoreWarnings> |
| 1 | SYSTEM | TXT | APSTIN | 3000 | |
| 1 | SYSTEM | TXT | Banks | 3000 | select Bank, Description from ApBank |
| 1 | SYSTEM | TXT | CUSTOMER | 3000 | select Job, JobDescription as [Job Description] from WipMaster where Right(Customer,Len('0')) = '0' |
| 1 | SYSTEM | TXT | CUSTOMER1 | 3000 | select Job, JobDescription as [Job Description] from WipMaster where Right(Customer,Len('0')) = '0' |
| 1 | SYSTEM | TXT | DAN2 | 3000 | Select * from vw_GRNForDAN1 |
| 1 | SYSTEM | TXT | GRIDTEST | 3000 | Select SalesOrder as [Sales Order], Customer, OrderStatus as [Order Status] from SorMaster |
| 1 | SYSTEM | TXT | INVJOBS | 3000 | select Job, JobDescription as [Job Description] , Customer from WipMaster where Right(StockCode,Len('0')) = '0' |
| 1 | SYSTEM | TXT | InventoryQty | 3000 | select * from vw_InventoryQty where Right(Warehouse,Len('0')) = '0' |
| 1 | SYSTEM | TXT | InventoryQL | 3000 | select * from vw_InventoryQty |
| 1 | SYSTEM | TXT | JohnTry | 3000 | Select SalesOrder as [Sales Order], Customer, OrderStatus as [Order Status], OrderDate from SorMaster |
| 1 | SYSTEM | TXT | JohnTry1 | 3000 | select Job, JobDescription as [Job Description] from WipMaster where Right(Customer,Len('0')) = '0' |

5. The following error indicates the SQL statement has not been set up in the Custom Configuration.



Add an SQL Statement to the SYSPRO Custom Configuration

- If a tile title has a space, the Espresso Custom Configuration must have an under score where the space is. For instance a tile named “Inventory Query” must have an Espresso Custom Configuration named “Inventory_Query”
- This component can also be added as a tab control to existing SYSPRO components. Further instructions will follow.